



AK RESIN ART COLLECTION

CREATIVE ART

The Team
Augustus & Francisco Kotei

Augustus Kotei:

After graduating from the prestigious Chelsea School of Arts and Design, Augustus established a successful design studio in London.

Now working alongside world renowned interior designers, architects and international fashion houses. Having worked as a decorative and scenic artist for film and stage sets, he creates bespoke surface designs for worldwide projects and installations. The professional finish to his work adds a sophisticated detail to any interior, combining liquid metal, resin, plaster and paint, for a truly unique design.

Always continuing to study his craft, Augustus also represents some of the leading paint producers from Europe, furthering the development of these inventive techniques by teaching and demonstrating their decorative products to industry specialists.

Having worked closely with artisans in Italy and Spain for many years, Augustus continues to travel extensively for inspiration. He draws on the influence of the local culture, architecture and landscape to expand his collection of paintings, wallcoverings and extensive photography portfolio.

With his education in fine arts, he applies this artistic skill and utilises a wealth of technical knowledge in his pursuit to create imaginative and progressive artwork. The originality of his creations and desire to evolve the pieces, illustrates his driving passion in the interpretation of pattern and unites innovative design with authentic craftsmanship.

Francisco Kotei:

Having graduated in multimedia platform-apps and website developments, Francisco Kotei, 2nd generation has now joined team with Augustus Kotei at The Design Studio in London. As an intern, Francisco worked with a computer software company in Spain.

At a young age, his interest in Art and Design enabled him to travel and assist with projects and to visit decorative paint factories in Italy and the rest of Europe. During the summer holiday periods, he gained a wealth of experience working to prepare samples at the Design Studio in London.

He utilises his skills and knowledge to good effect in creating bespoke designs of wallcoverings with our artworks prior to print production at the studio as well as maintaining the company's website.

“Creativity is our passion”

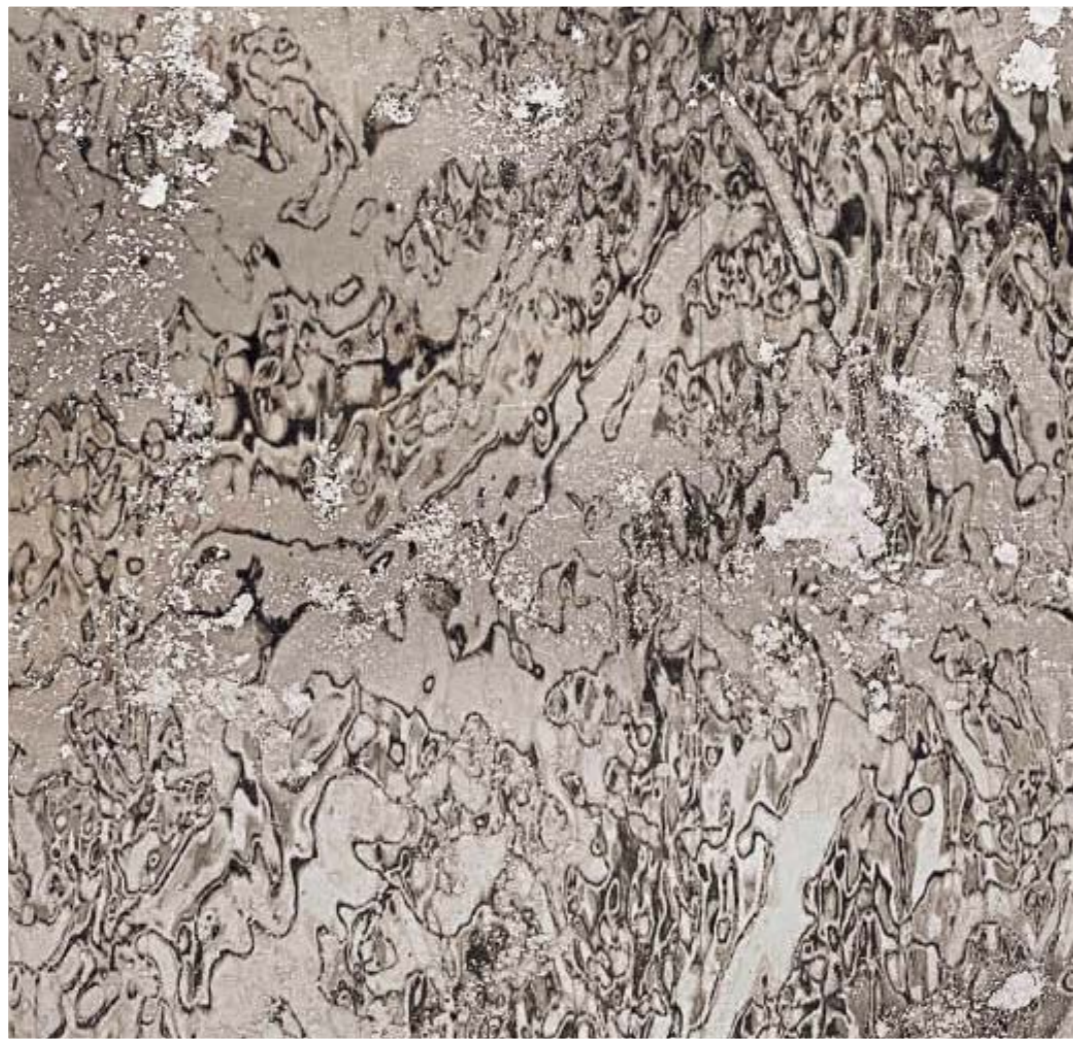
CASCADE





Cascade

CASCADE



CASCADE





2500mm

PANEL 1
(1000mm wide x 2500mm high)
Please note (Panel 1) will always have to be hung first

PANEL 2
(1000mm wide x 2500mm high)

PANEL 3
(1000mm wide x 2500mm high)

PANEL 4
(1000mm wide x 2500mm high)

4000mm



DEEP DREAMS

DEEP DREAMS





2500mm

PANEL 1
(1000mm wide x 2500mm high)
Please note (Panel 1) will always have to be hung first

PANEL 2
(1000mm wide x 2500mm high)

PANEL 3
(1000mm wide x 2500mm high)

PANEL 4
(1000mm wide x 2500mm high)

4000mm

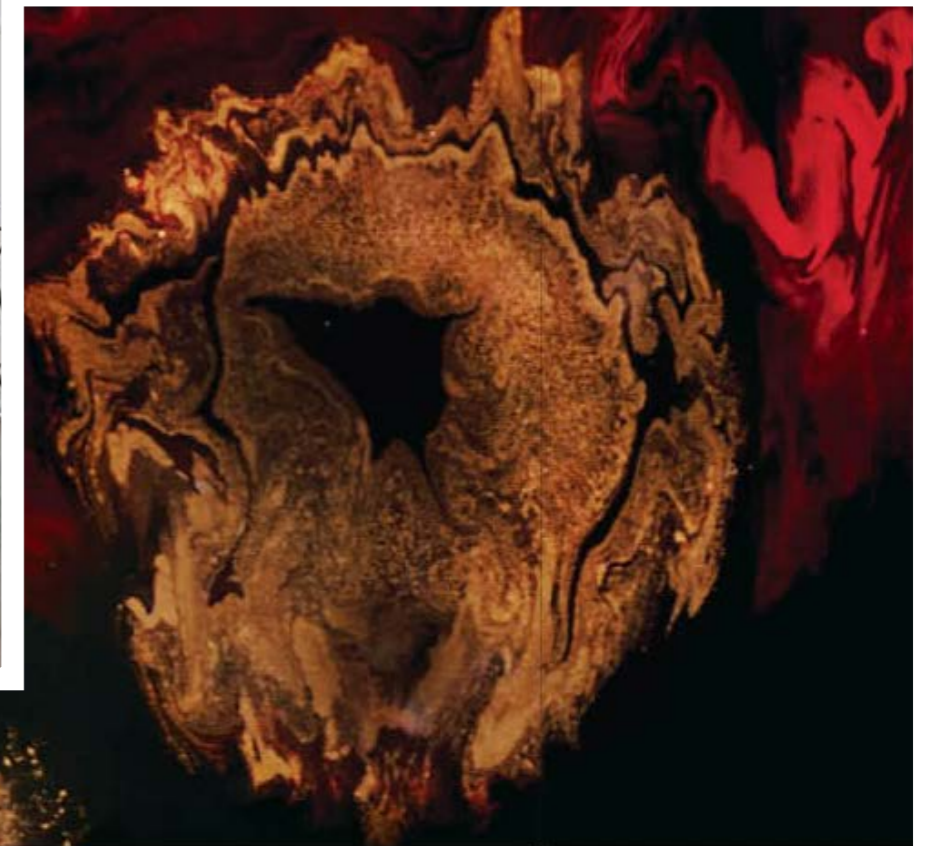
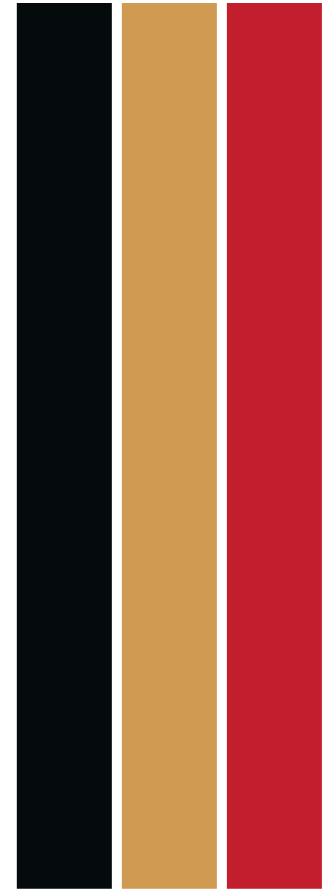


STAYING STRONG





STAYING STRONG





Staying Strong



2500mm

PANEL 1
(1000mm wide x 2500mm high)
Please note (Panel 1) will always have to be hung first

PANEL 2
(1000mm wide x 2500mm high)

PANEL 3
(1000mm wide x 2500mm high)

PANEL 4
(1000mm wide x 2500mm high)

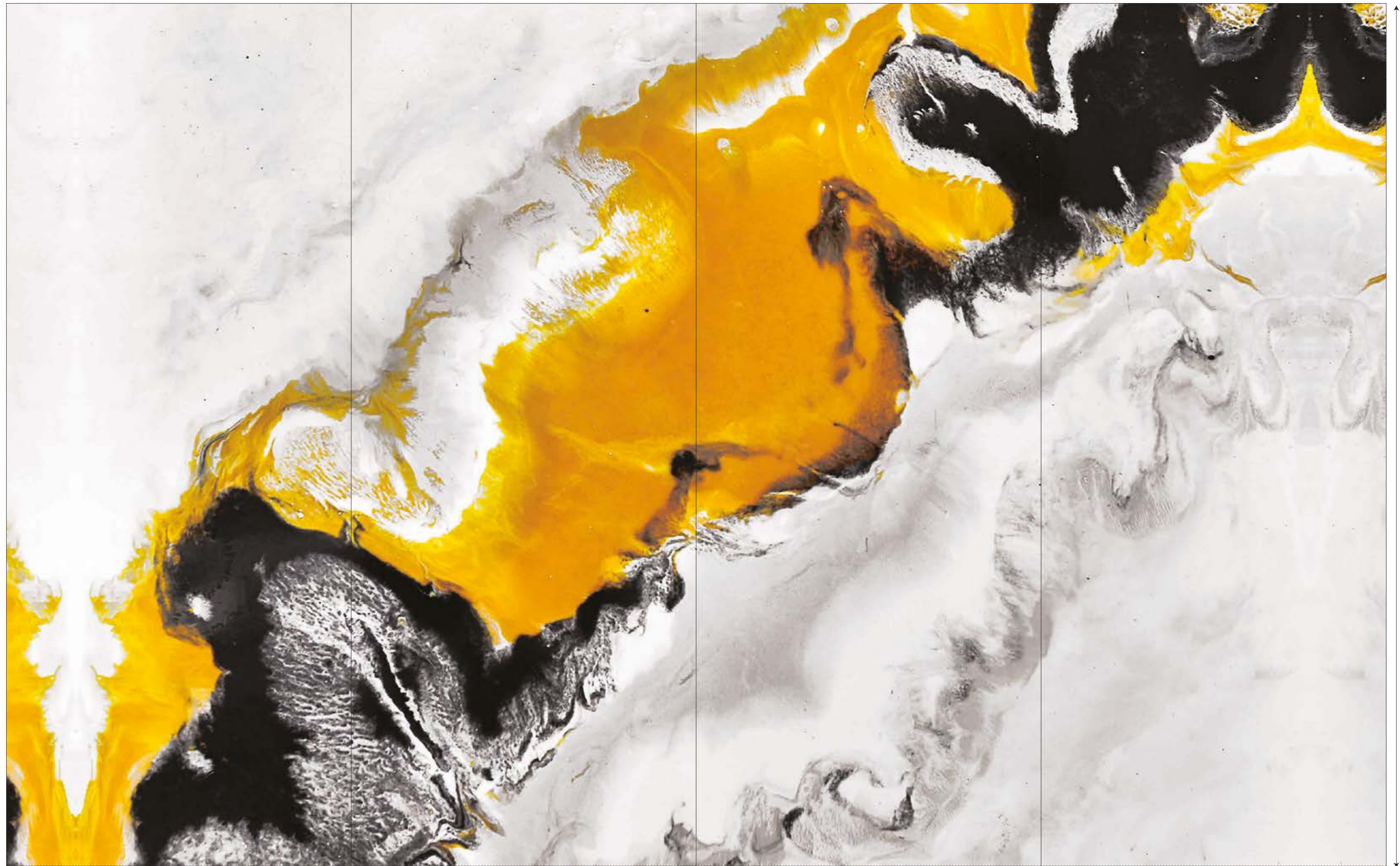
4000mm



The Flow - Awakening

THE FLOW - AWAKENING





2500mm

PANEL 1
(1000mm wide x 2500mm high)
Please note (Panel 1) will always have to be hung first

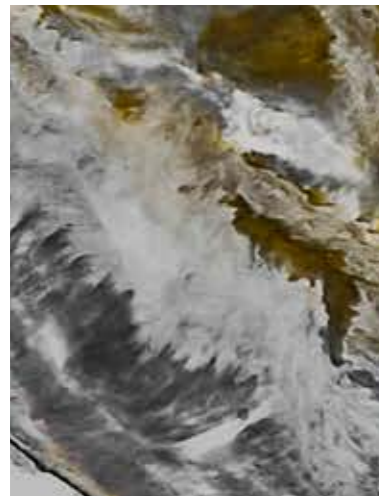
PANEL 2
(1000mm wide x 2500mm high)

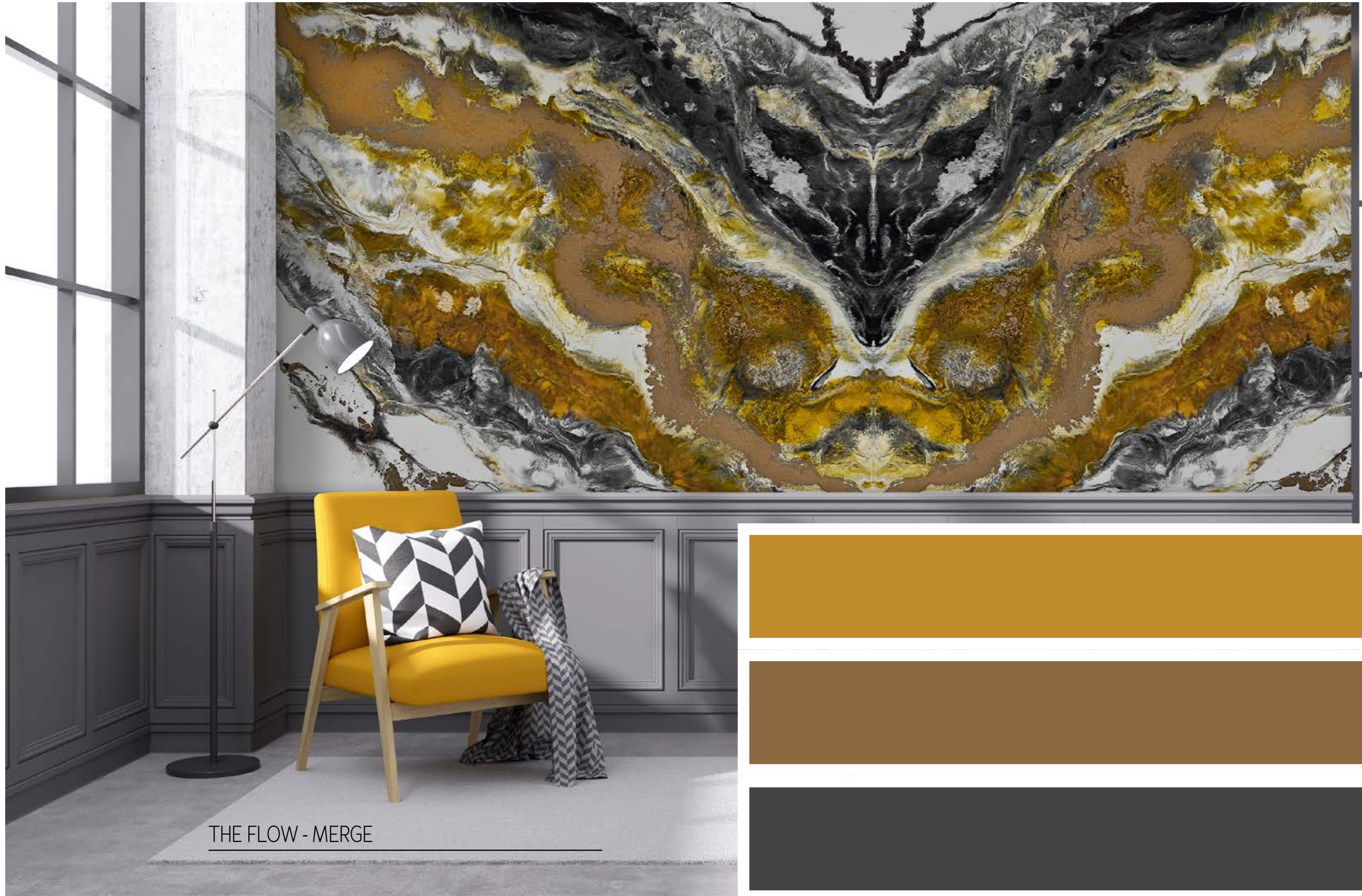
PANEL 3
(1000mm wide x 2500mm high)

PANEL 4
(1000mm wide x 2500mm high)

4000mm

THE FLOW - MERGE



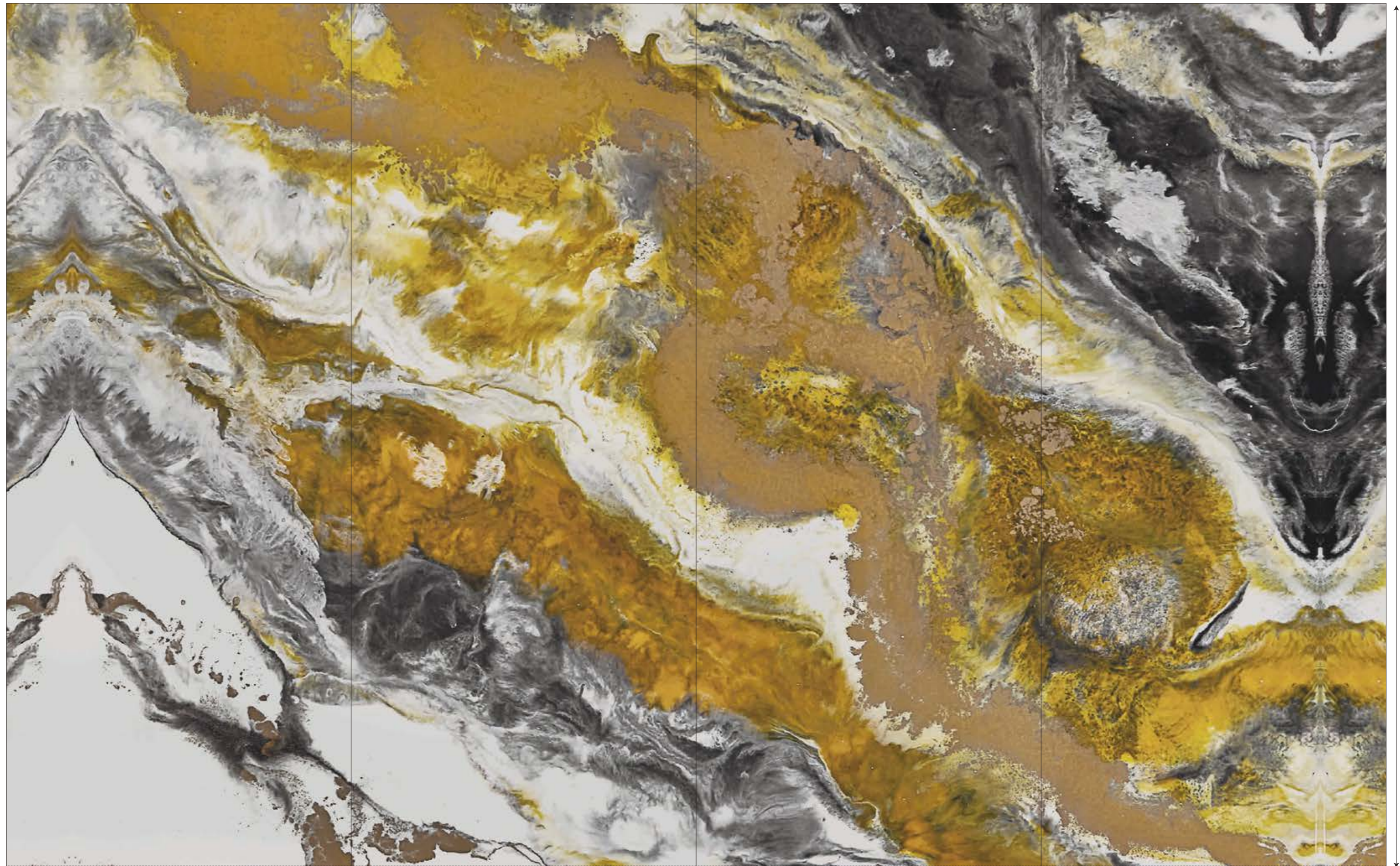


THE FLOW - MERGE





The Flow - Merge



2500mm

PANEL 1
(1000mm wide x 2500mm high)
Please note (Panel 1) will always have to be hung first

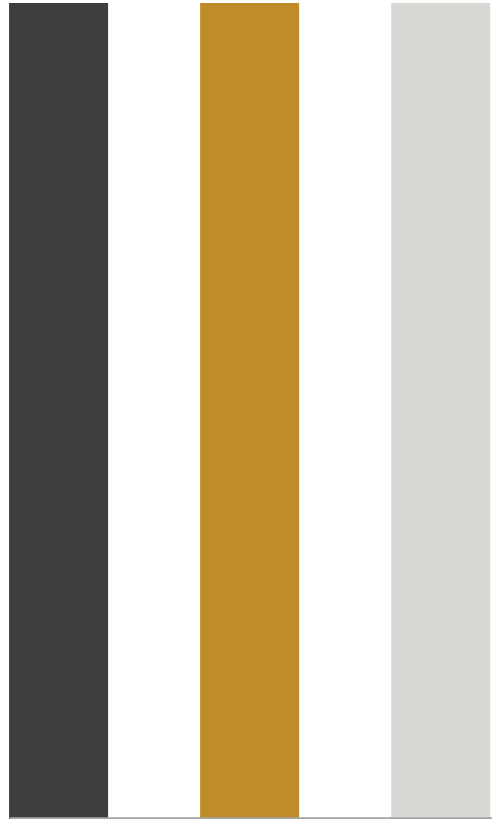
PANEL 2
(1000mm wide x 2500mm high)

PANEL 3
(1000mm wide x 2500mm high)

PANEL 4
(1000mm wide x 2500mm high)

4000mm

WORLD REVOLVES





*World
Revolves*



2500mm

PANEL 1
(1000mm wide x 2500mm high)
Please note (Panel 1) will always have to be hung first

PANEL 2
(1000mm wide x 2500mm high)

PANEL 3
(1000mm wide x 2500mm high)

PANEL 4
(1000mm wide x 2500mm high)

4000mm

WALLCOVERING SPECIFICATION SHEET

| DESCRIPTION |
|-------------------------------------|
| Textured 400gsm fabric backed vinyl |
| Printed in the U.K. |



Augustus Kotei © 2021

www.augustuskotei.com

info@augustuskotei.com