



## AK 2021 COLLECTION

---

CREATIVE ART

## **The Team** **Augustus & Francisco Kotei**

Augustus Kotei:

After graduating from the prestigious Chelsea School of Arts and Design, Augustus established a successful design studio in London.

Now working alongside world renowned interior designers, architects and international fashion houses. Having worked as a decorative and scenic artist for film and stage sets, he creates bespoke surface designs for worldwide projects and installations. The professional finish to his work adds a sophisticated detail to any interior, combining liquid metal, resin, plaster and paint, for a truly unique design.

Always continuing to study his craft, Augustus also represents some of the leading paint producers from Europe, furthering the development of these inventive techniques by teaching and demonstrating their decorative products to industry specialists.

Having worked closely with artisans in Italy and Spain for many years, Augustus continues to travel extensively for inspiration. He draws on the influence of the local culture, architecture and landscape to expand his collection of paintings, wallcoverings and extensive photography portfolio.

With his education in fine arts, he applies this artistic skill and utilises a wealth of technical knowledge in his pursuit to create imaginative and progressive artwork. The originality of his creations and desire to evolve the pieces, illustrates his driving passion in the interpretation of pattern and unites innovative design with authentic craftsmanship.

### Francisco Kotei:

Having graduated in multimedia platform-apps and website developments, Francisco Kotei, 2nd generation has now joined team with Augustus Kotei at The Design Studio in London. As an intern, Francisco worked with a computer software company in Spain.

At a young age, his interest in Art and Design enabled him to travel and assist with projects and to visit decorative paint factories in Italy and the rest of Europe. During the summer holiday periods, he gained a wealth of experience working to prepare samples at the Design Studio in London.

He utilises his skills and knowledge to good effect in creating bespoke designs of wallcoverings with our artworks prior to print production at the studio as well as maintaining the company's website.

“Creativity is our passion”

PARADISE



PARADISE







CRACKED ROSE



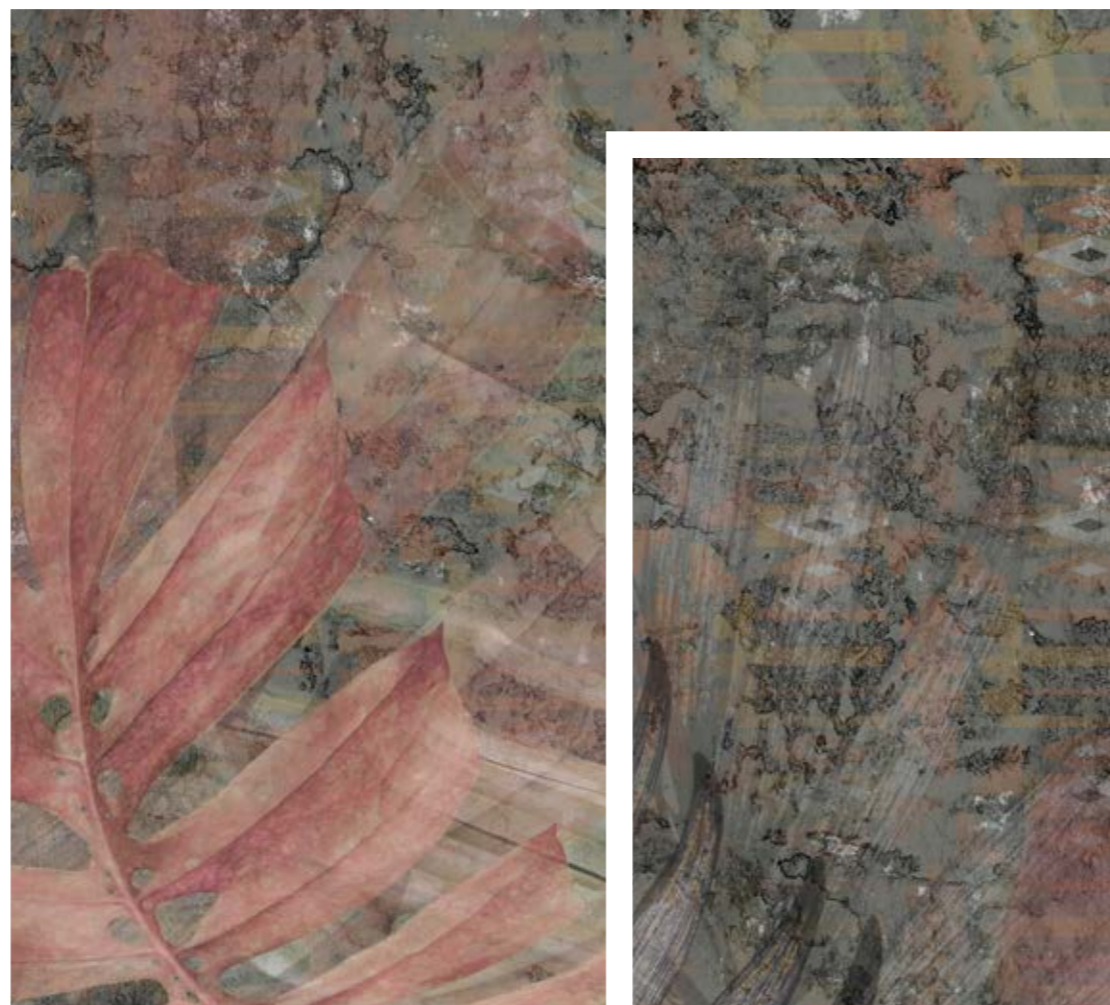
CRACKED ROSE

---





KENTE PALMS





KENTE PALMS



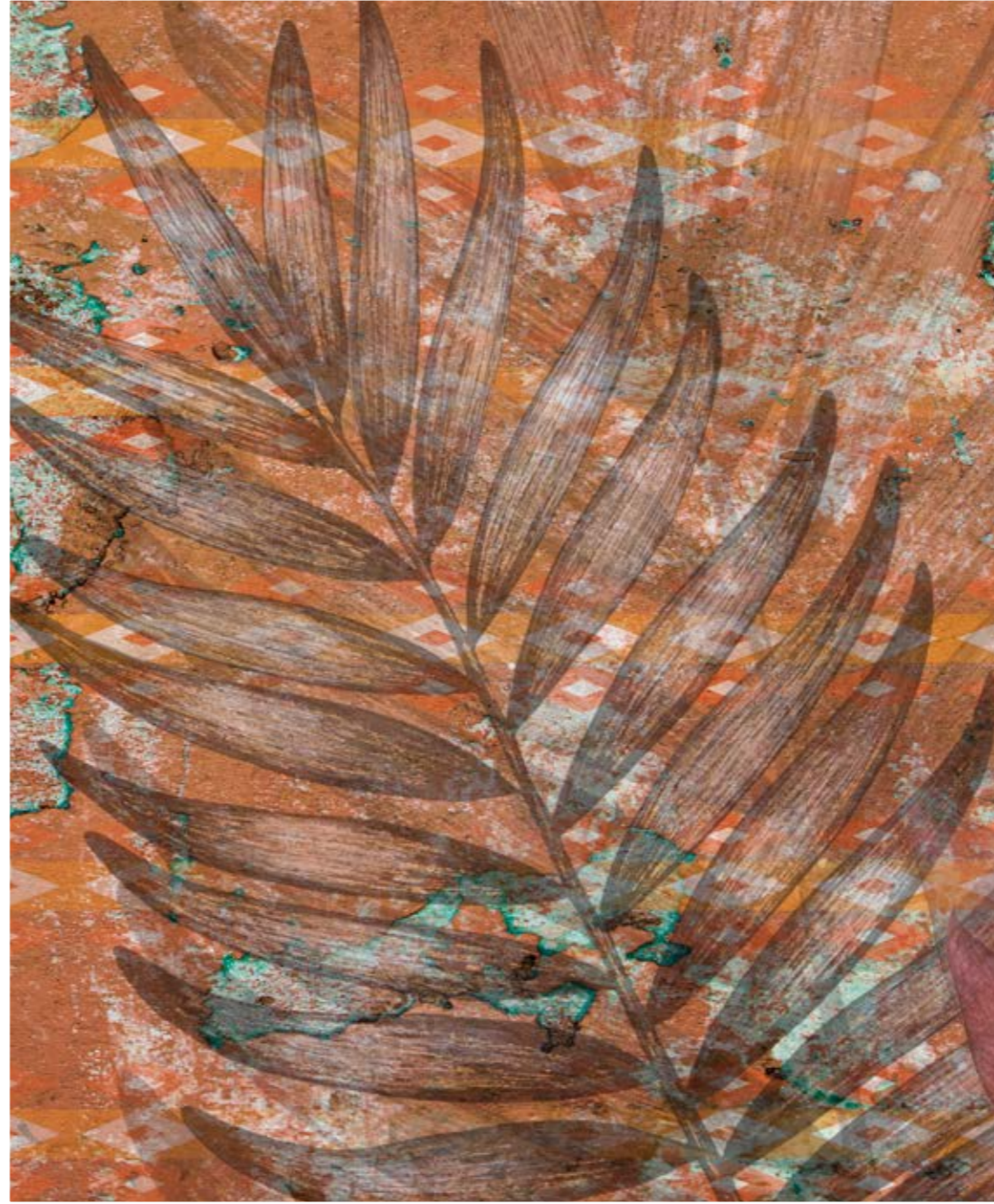
KENTE PALMS II

---

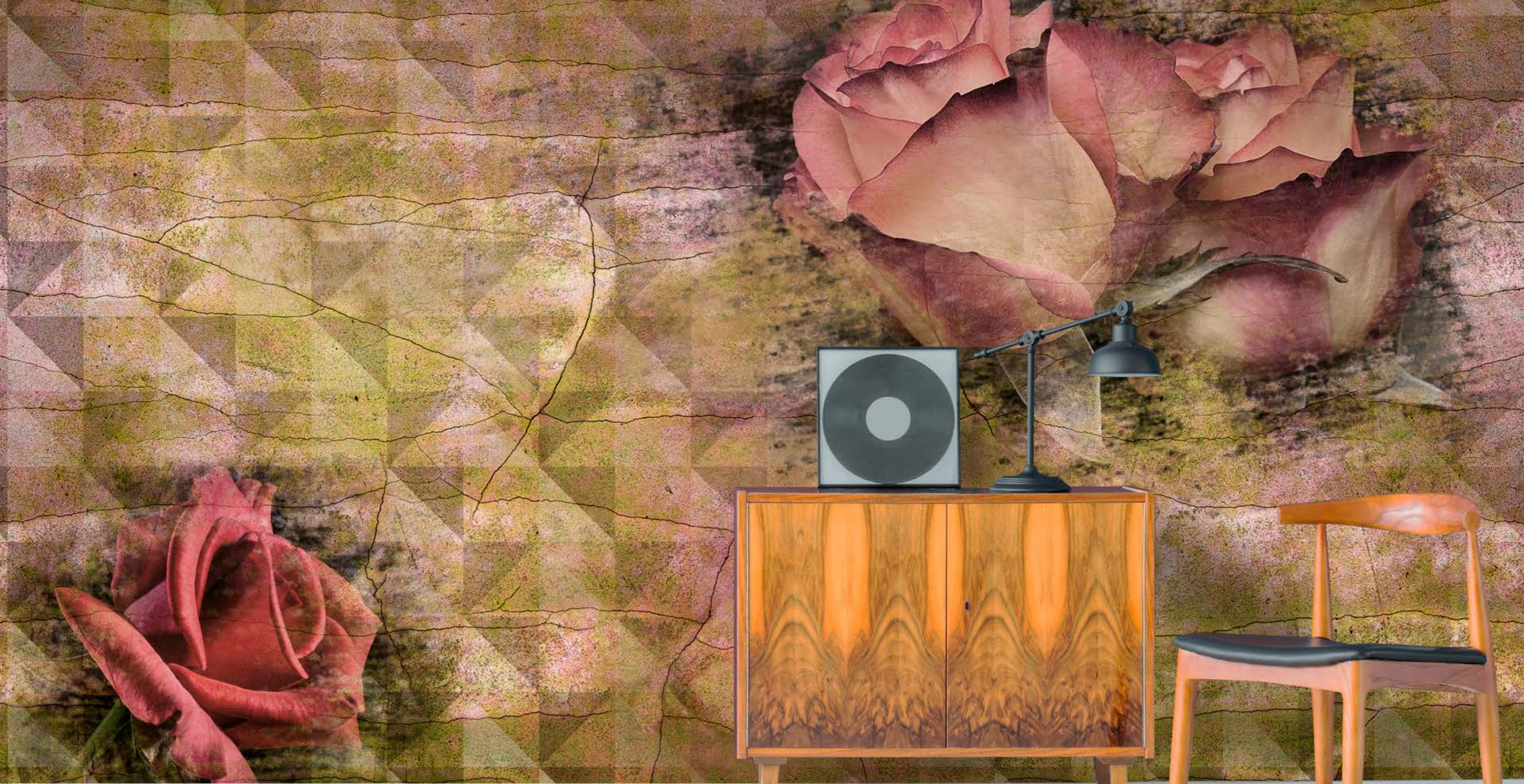


KENTE PALMS II

---





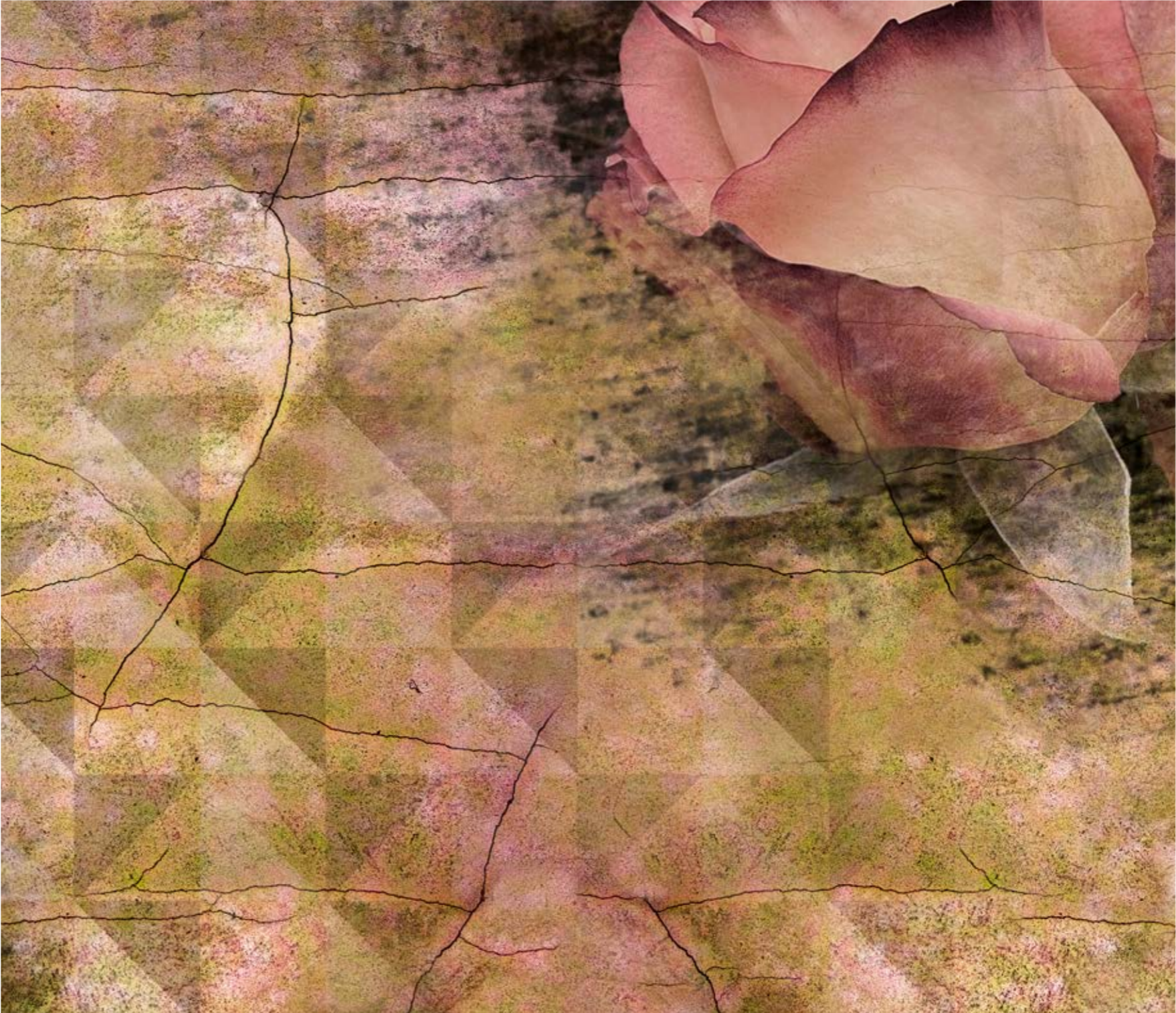


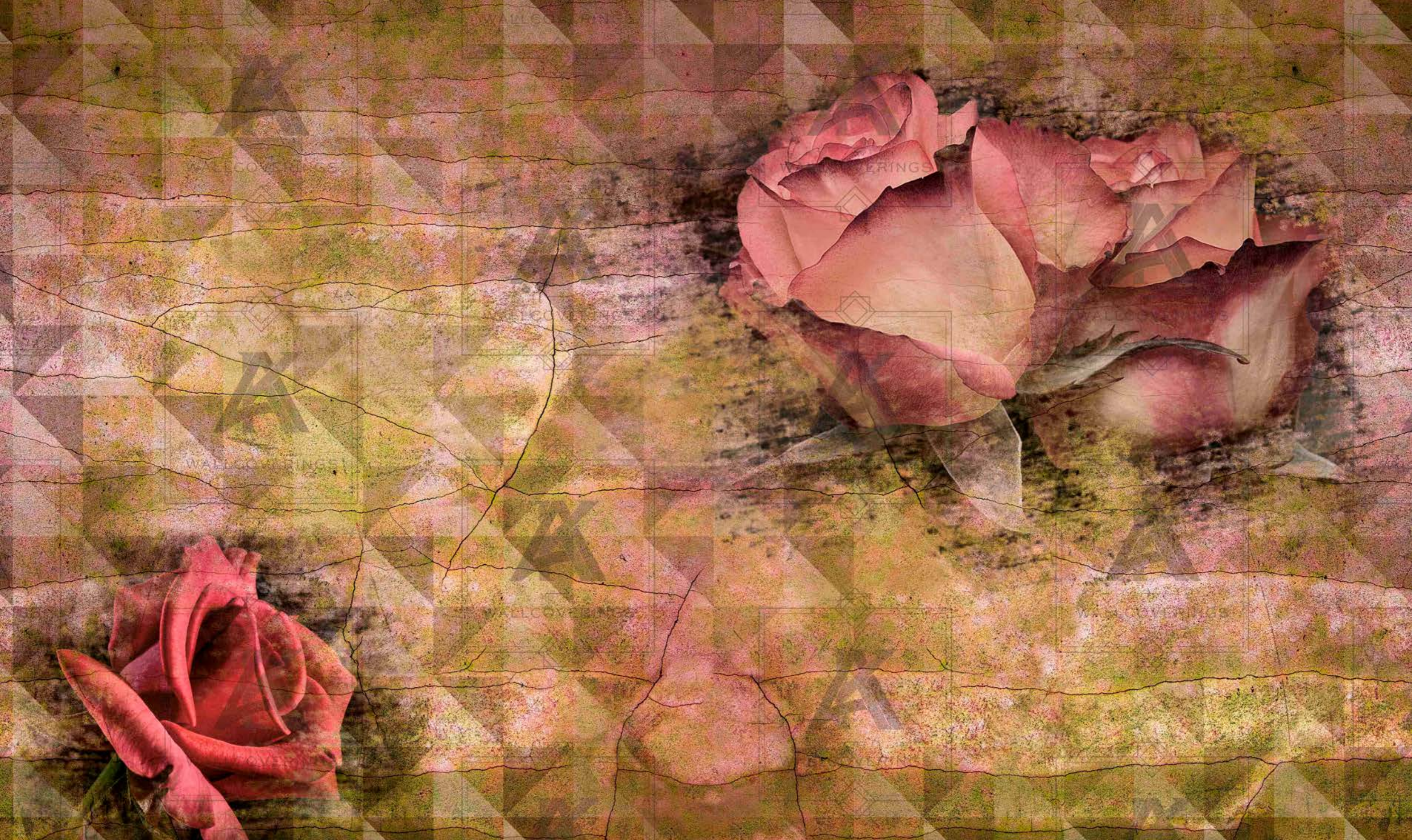
GEO ROSE



GEO ROSE

---







GEO ROSE II



GEO ROSE II

---





AQUA LEAVES

---





AQUA LEAVES

---

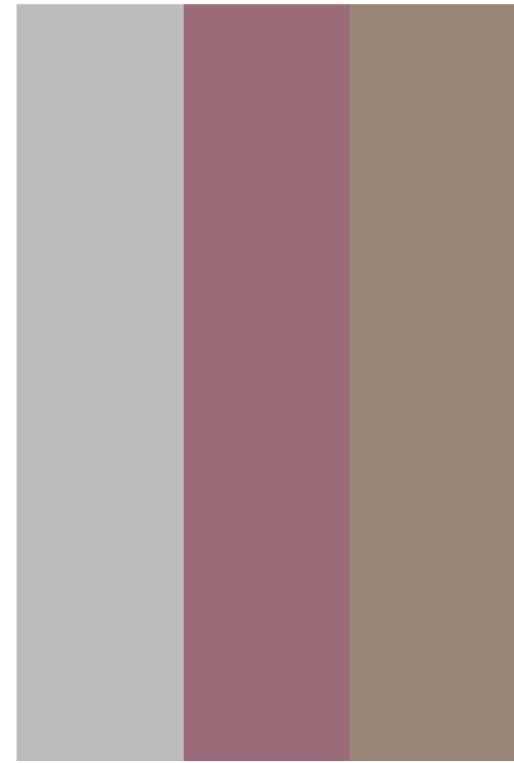




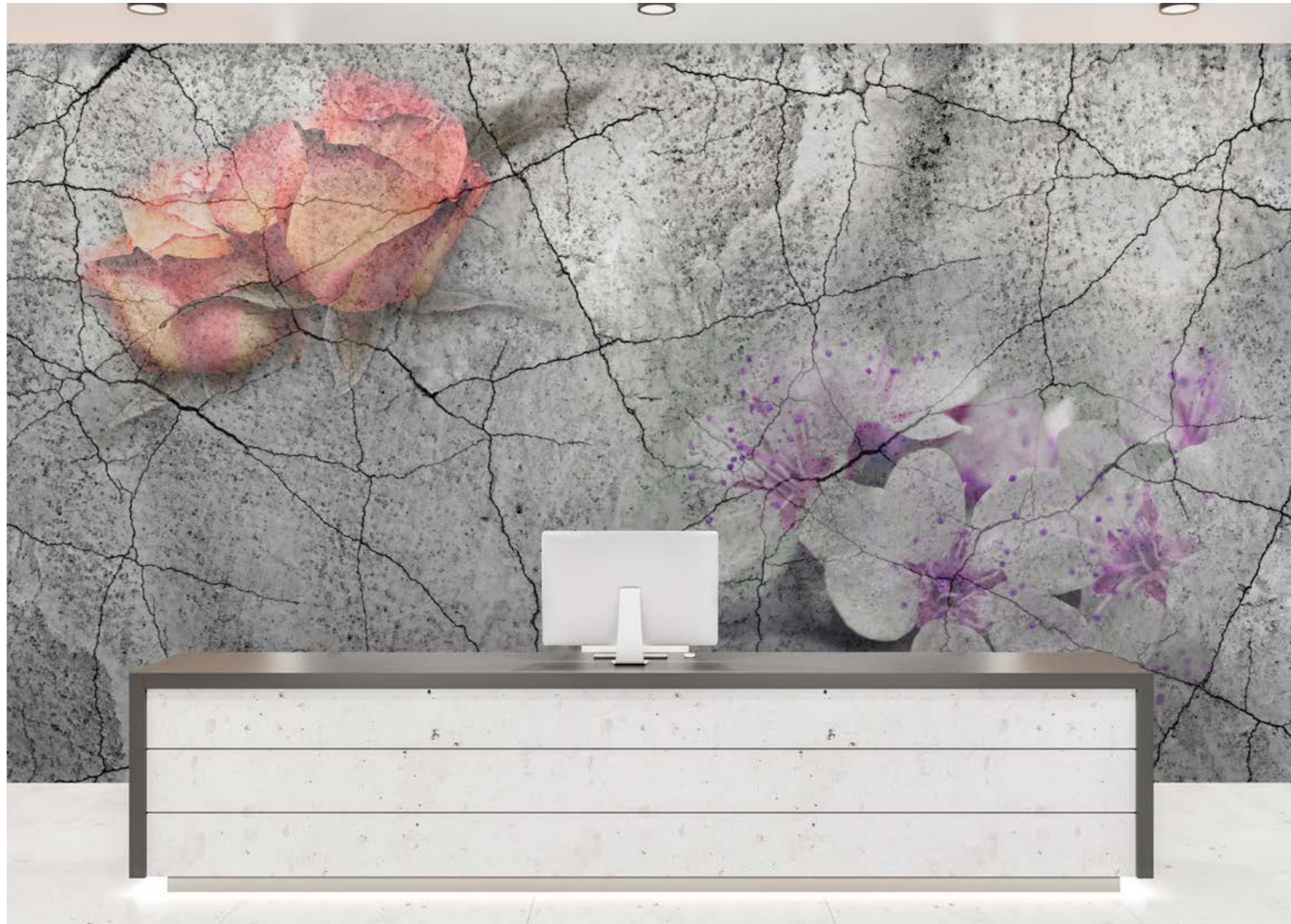


CORAL LEAVES

---







SPRING BLOSSOM



SPRING BLOSSOM



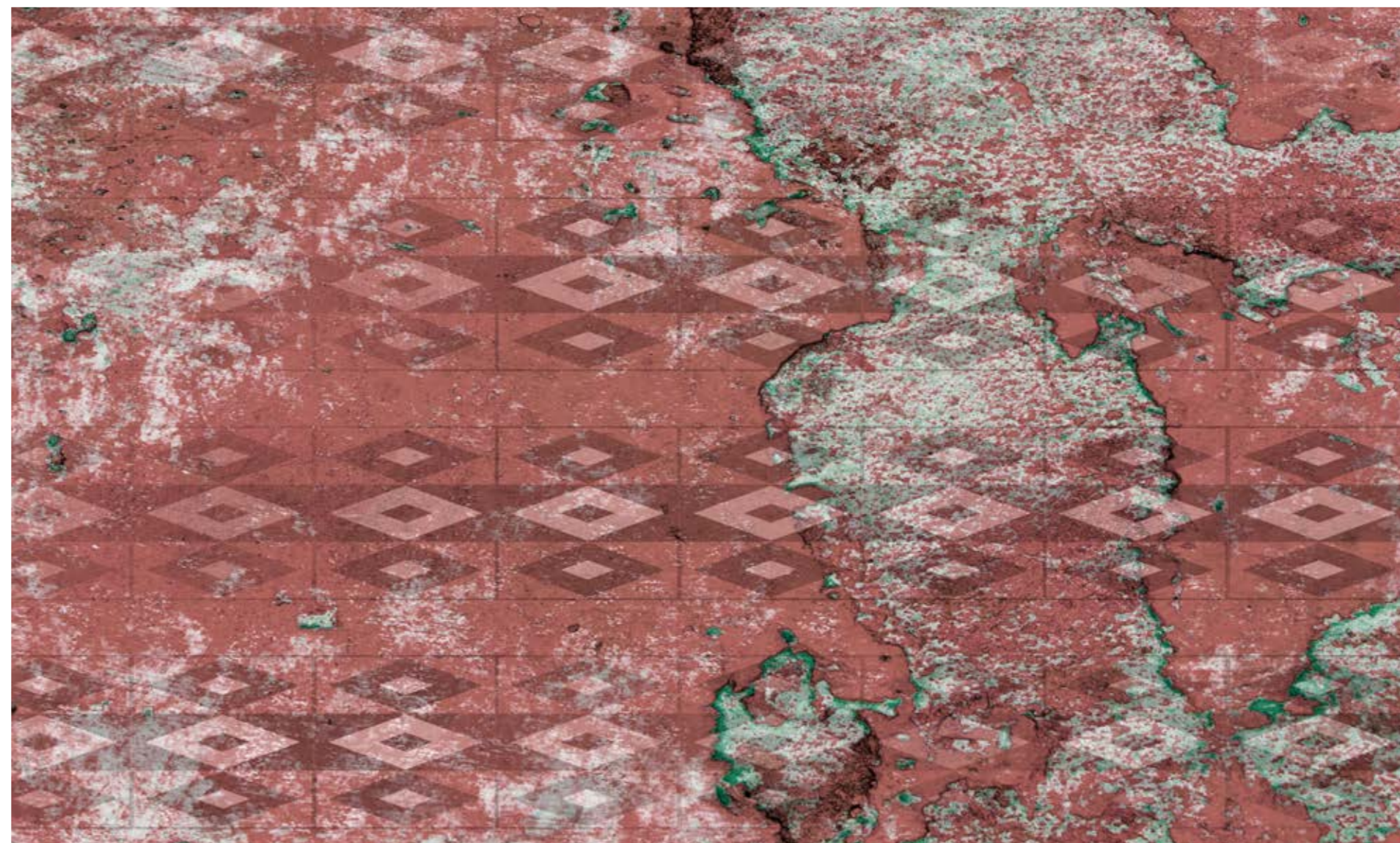
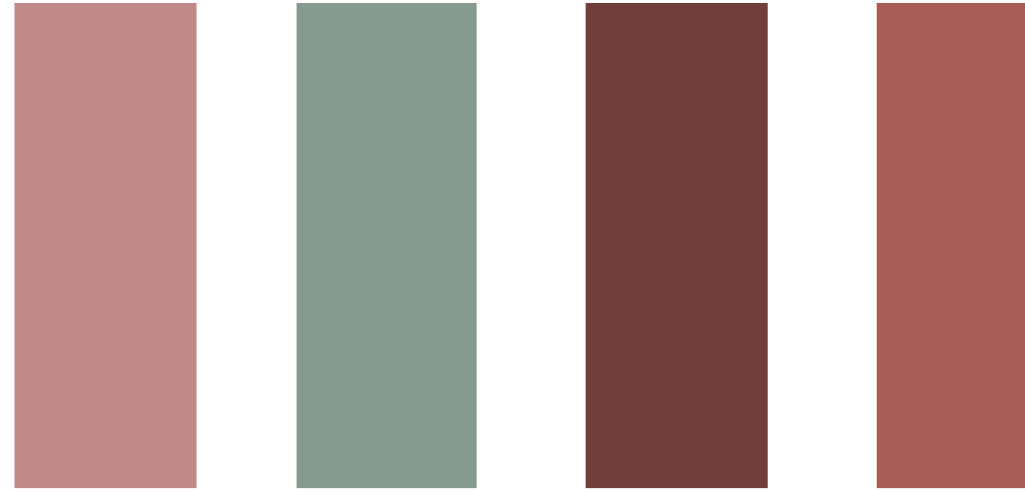
ANCIENT ROMAN COLUMN

---



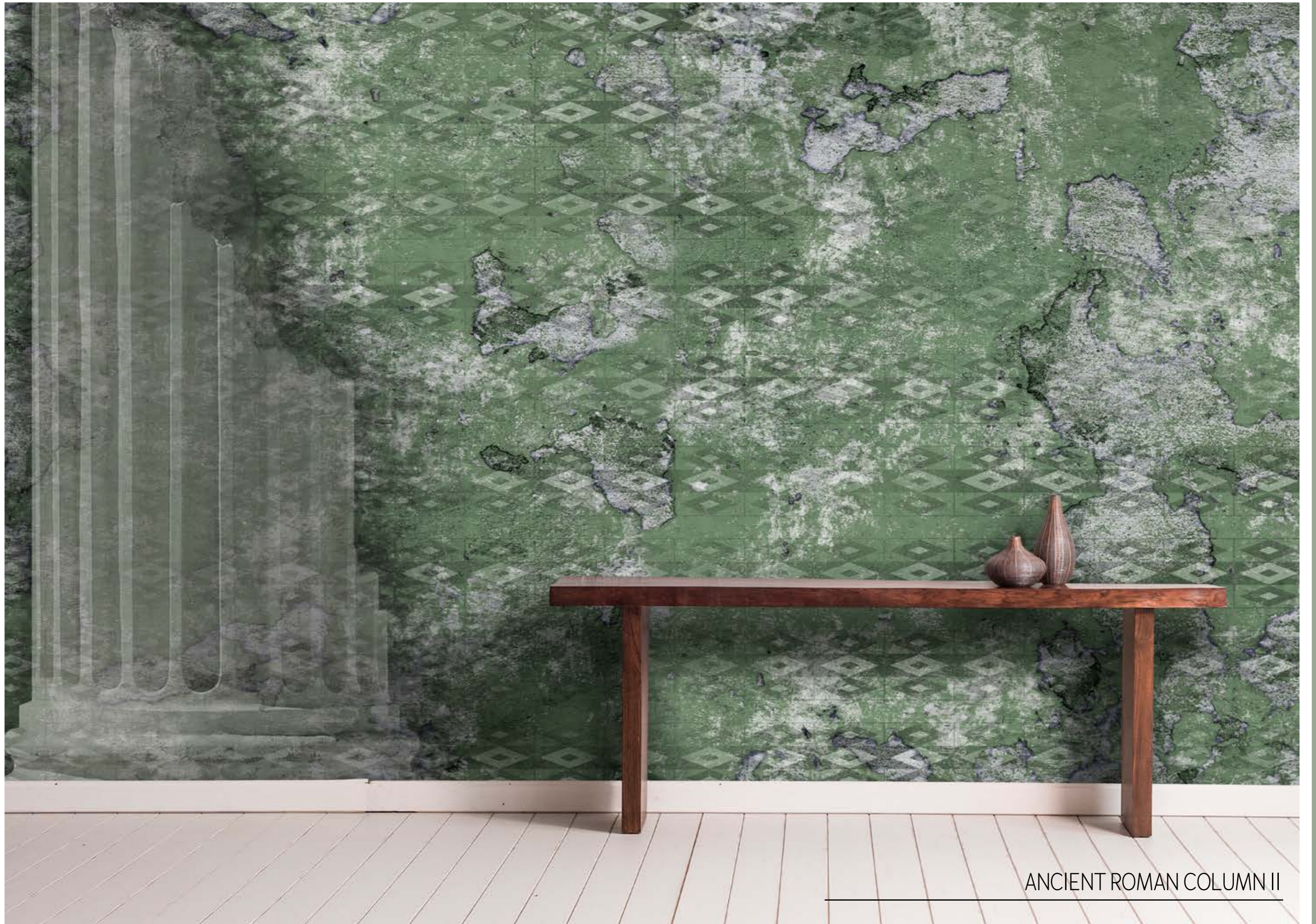
ANCIENT ROMAN COLUMN

---





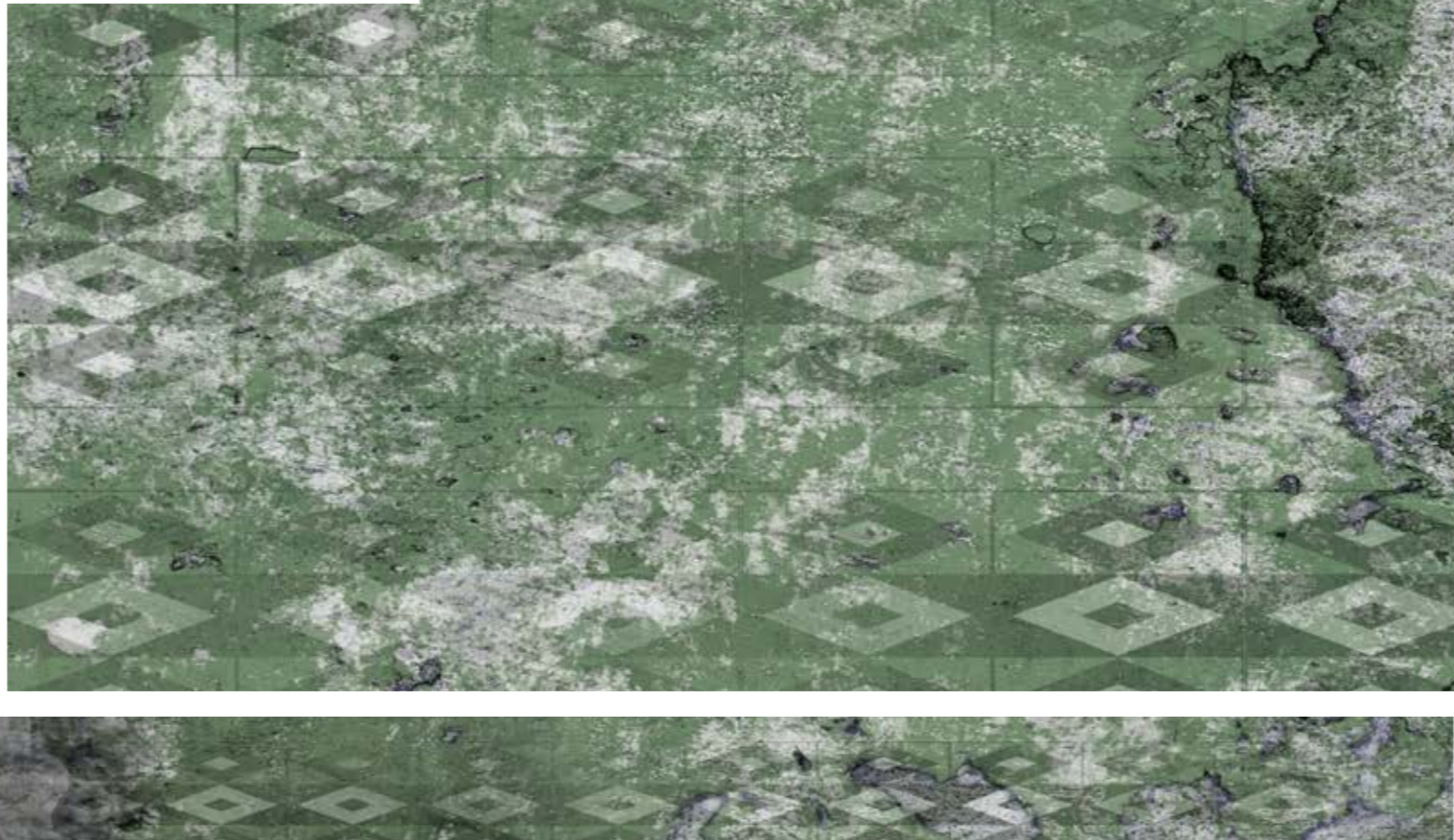
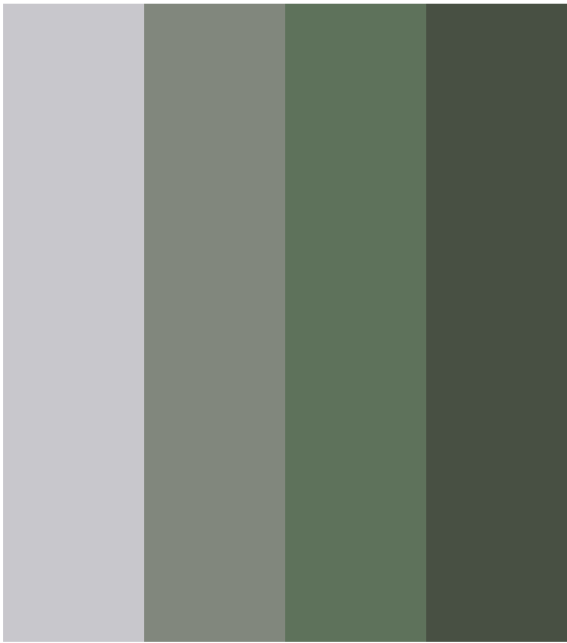
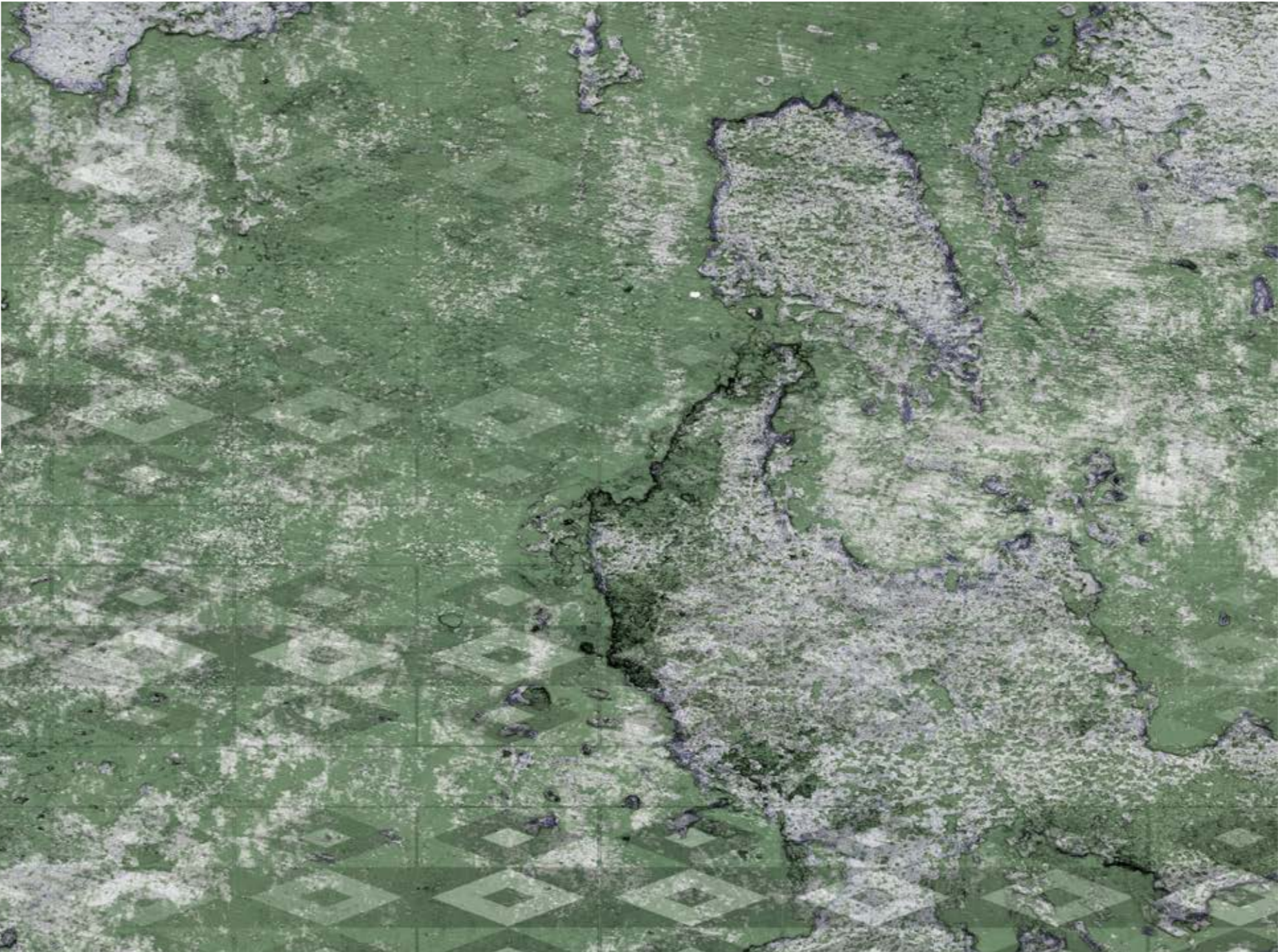
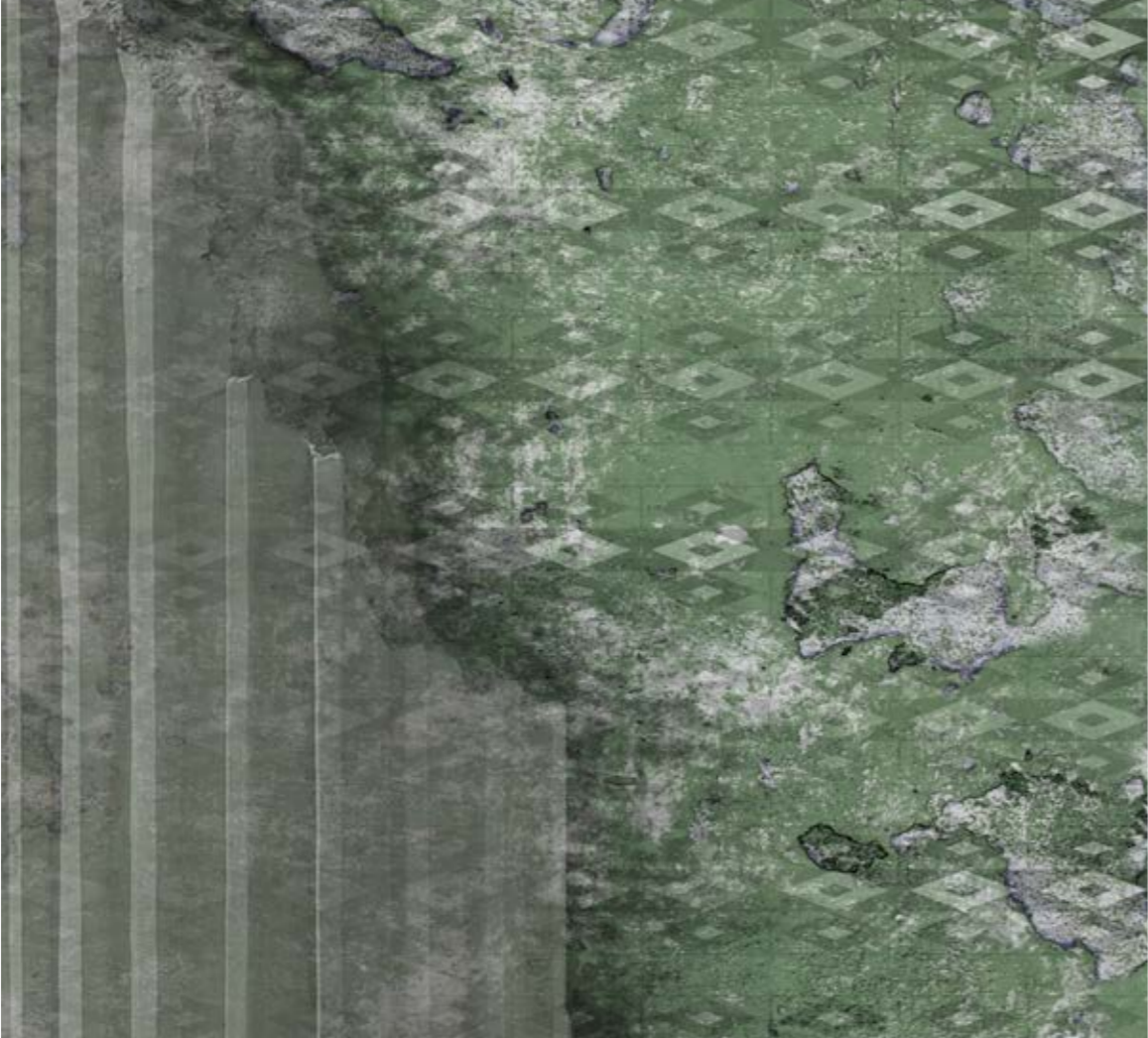




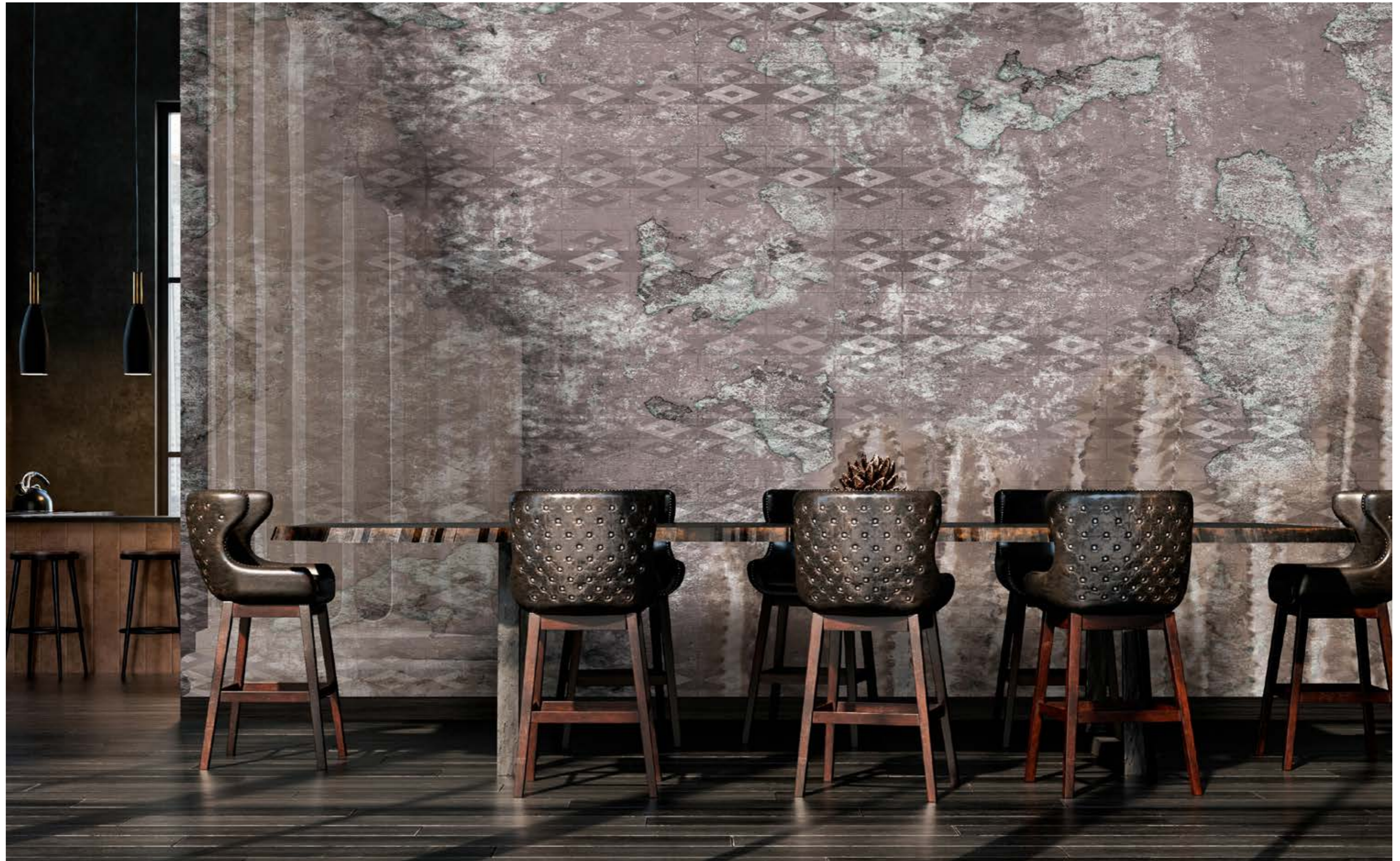
ANCIENT ROMAN COLUMN II

ANCIENT ROMAN COLUMN II

---



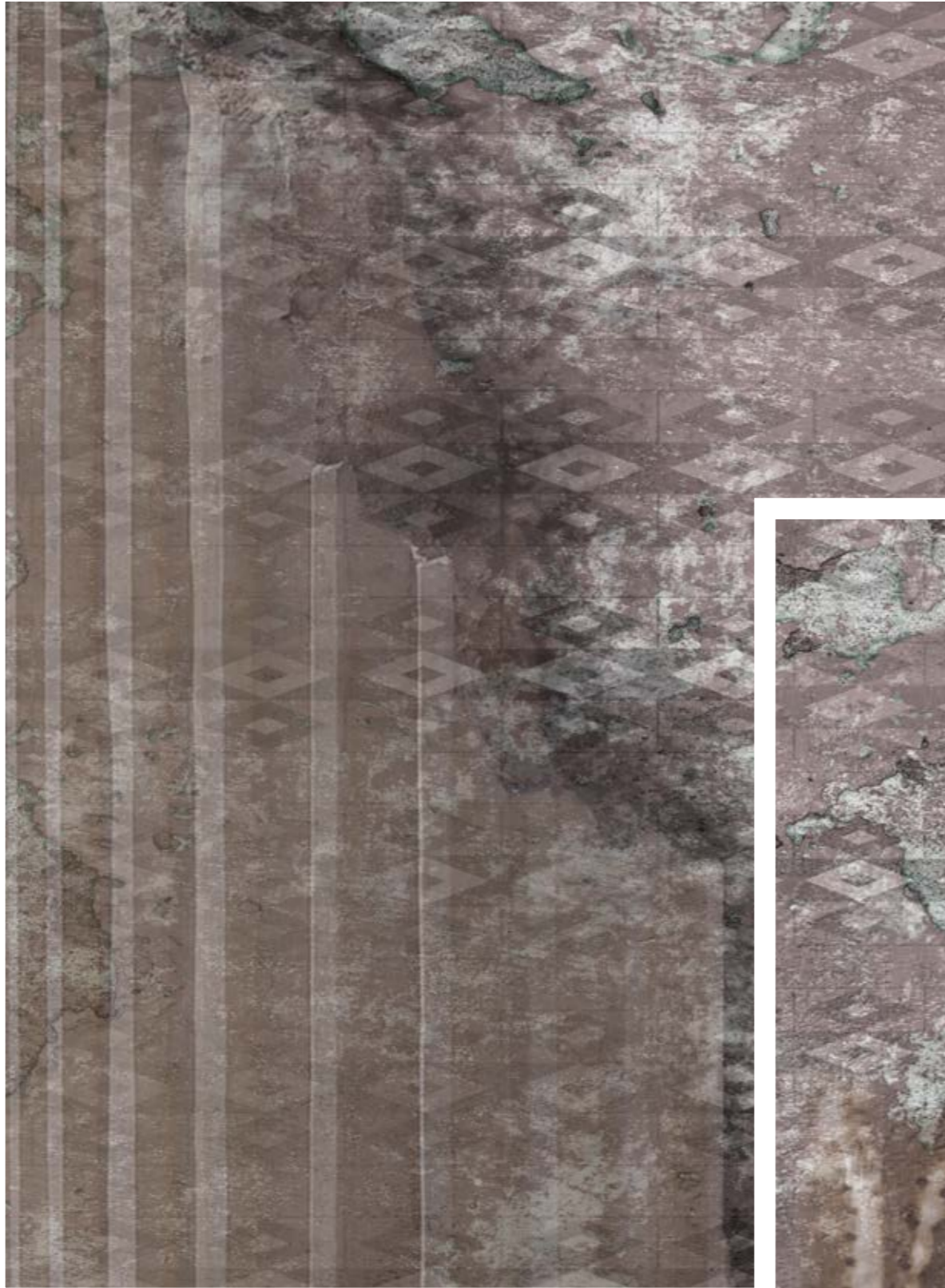




ANCIENT ROMAN COLUMN III

ANCIENT ROMAN COLUMN III

---





## WALLCOVERING SPECIFICATION SHEET

<b>MA8003 Rough Mica Non-woven (Luna)</b>
Description A tactile, textured Mica coated non-woven with a subtle pearlescent finish. Mica coating is applied to the rough side of MA8003 prior to printing.
Hanging and Care Paste the wall. Use a quality pre-mix tub adhesive for non-woven wallpapers. Avoid contact with the printed surface. Spongeable. Light Fastness - Good.
Fire Rating EN BS 13501-1:2002 Class B, s1, d0
FSC Certified C104236
Unprinted Weight 167gsm (147gsm base non-woven with 20gsm mica coating)
Composition % Cellulose 48.6. Polyester 16. Binder 18.2. Fillers 16.9. Others 0.3
Printed using HP Latex Ink Technology
Available sizes Trimmed to 52cms, 70cms Untrimmed up to max print area 149cms

<b>CK620-21 Cork</b>
Description A tiled cork veneer wallcovering with a printed white ground on a foil / paper backing.
Hanging and Care Paste the paper. Use a quality pre-mix tub adhesive. Avoid contact with the printed surface. Brush / Vacuum clean only. Light Fastness - Good.
Fire Rating Class C, S1, d0
Unprinted Weight 400gsm (approx. variable natural product)
Natural cork on foil with Paper Backing
Printed using HP Latex Ink Technology
Available sizes Trimmed to print width of 85cm Untrimmed up to max print width 89cms



## WALLCOVERING SPECIFICATION SHEET

<b>FD270-17 Metallic Ground Grasscloth</b>
<p>Description</p> <p>A coarse weave hemp grasscloth, natural in colour with a matt foil, non-woven backing.</p>
<p>Hanging and Care</p> <p>Paste the wall. Use a quality pre-mix tub adhesive for non-woven wallpapers. Avoid contact with the printed surface. Dampen the non-woven backing and book for 2 minutes before hanging. Brush / Vacuum clean only. Light Fastness - Good.</p>
<p>Fire Rating</p> <p>BS EN 13501-1:2007+A1:2009 Class B, s1, d0</p>
<p>Non- Woven Backing FSC Certied C104236</p>
<p>Unprinted Weight</p> <p>200gsm (approx. variable natural product)</p>
<p>100% Hemp on Non-Woven Backing - Composition % Cellulose 48.6. Polyester 16. Binder 18.2. Fillers 16.9. Others 0.3</p>
<p>Printed using HP Latex Ink Technology</p>
<p>Available sizes</p> <p>Trimmed to 85cms Untrimmed up to max print area 89cms</p>

<b>Type I Vinyl Paper</b>
<p>Description</p> <p>Available in a variety of textures paper backed contract vinyl. Ideal for use in high traffic areas. Also available in Type II.</p>
<p>Hanging and Care</p> <p>Paste the paper. Use a quality pre-mix tub adhesive for non-woven wallpapers. Avoid contact with the printed surface. Washable. Light Fastness - Good.</p>
<p>Fire Rating</p> <p>UK and EU: EN BS 13501-1:2007+A1:2009 Class O, s1, d0 USA: ASTM E 84-12c Class A</p>
<p>Paper backing FSC Certified C104236</p>
<p>Unprinted Weight</p> <p>300gsm</p>
<p>Uncoated mechanical wallpaper base comprising of bleached and unbleached cellulose and unbleached mechanical wood pulp.</p>
<p>Printed using HP Latex Ink Technology</p>
<p>Available sizes</p> <p>Trimmed to 52cms and 60cms. Untrimmed up to max print area 129cms.</p>

## WALLCOVERING SPECIFICATION SHEET

<b>Stucco / Fibre / Plaster</b>
Description Textured 350gsm non-woven backed wallpaper
Bio Pruf anti-bacterial treated
Fire Rating Euroclass B-s1 d0
IMO marine certified
Dimensionally stable

Printed in the U.K.



Augustus Kotei © 2021

---

[www.augustuskotei.com](http://www.augustuskotei.com)  
[info@augustuskotei.com](mailto:info@augustuskotei.com)